



1131 W. Warren
at the Lodge Freeway
Midtown Detroit
Located across from WSU SpartanNash

MON-SAT 8am-8pm • SUN 8am-6pm
Phone: (313) 833-0815
university-foods.com

Get Ready for Summer



USDA Inspected
Fresh Ground Chuck
Family Pack

\$3.29
lb.

USDA Inspected • Bone-In
Center-Cut Pork Chops
Family Pack

\$2.29
lb.

USDA Grade 'A' Fresh
Boneless Chicken Breast
Family Pack

\$1.69
lb.

Seedless Green or Red Grapes

\$1.29
lb.



USDA Inspected
Boneless Beef Chuck Roast

\$3.99
lb.



USDA Inspected
T-Bone or Porterhouse Steak
Family Pack

\$5.99
lb.



USDA Inspected • Bone-In
Pork Sirloin Chops
Family Pack

\$1.49
lb.



Michigan Grown
Tender Green Asparagus

\$1.99
lb.



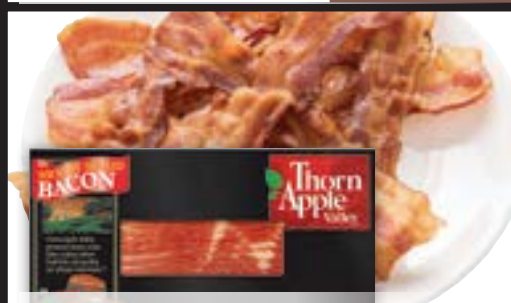
USDA Inspected • Bone-In
Pork Sirloin Roast

\$1.29
lb.



Bar-S Franks
Jumbo, Bun-Length, Turkey or Chicken
16 oz. (excludes beef)
or Eckrich Bologna & Cotto Salami 10-14 oz.

10/\$10



Thorn Apple Valley Bacon
12 oz.

2/\$5



POM Wonderful Tea
Assorted Varieties
12 oz.

10/\$10



Bob Evans Sausage Links or Patties
Assorted Varieties • 12 oz.

2/\$6



George's Party Wings
4 lb. bag

\$9.99



AquaStar Shrimp
Tail-On, Raw 41-50 ct. • 1 lb. bag

2/\$7



Red Ripe Strawberries
1 lb.

3/\$5

Our Family Pasta
12 - 16 oz.
(excludes lasagna)

10/\$10

General Mills Cereal
Lucky Charms (10.5 oz.),
Lucky Charms with Unicorn Marshmallows (11.5 oz.), Reese's Puffs (11.5 or 13 oz.), Cocoa Puffs (11.8 oz.), Cheerios (8.9 oz.) or Multi Grain Cheerios (9 oz.)

2/\$5

Kellogg's Cereal
(12 ct. double or 6 ct. mega rolls) or
Frosted Flakes (19 oz.);
or Pop-Tarts (12 ct.)

\$2.99

Aunt Millie's Homestyle Bread
(24 oz.) or
Honey Hot Dog or Hamburger Buns (8 ct.)

2/\$3

Wow! Frank's Red Hot Sauce
12 oz.

\$1.99

Fresh Express Salad Blends or Juicing Greens
10 - 11 oz. clamshell

2/\$6

Crisco Vegetable Oil
48 oz.

2/\$5

Hidden Valley Dressing
Cheddar & Bacon, Three Herb & Original Only
16 oz.

3/\$5

In our Dairy Dept.
Gold Peak Peach Iced Tea
59 oz.

4/\$5

Kool-Aid Jammers
10 ct.

5/\$10

Tropicana Orange Juice or Trop50
59 oz.

2/\$7

Our Family Charcoal
15.4 lb. bag

\$4.99

Breyers Ice Cream
(1.5 qt.), Breyers Delights or Ben & Jerry's Ice Cream (pint) or Pint Slices (3 ct.), Talenti Gelato or Sorbetto (pint), Magnum Ice Cream (14.8 oz.) or Bars (3 ct.), Klondike Bars (4 - 6 ct.) or Popsicle Novelties (18 - 20 ct.)

2/\$7

North Star Twin Pops
Assorted Varieties
6 ct.

5/\$5

Charmin Bath Tissue
(12 ct. double or 6 ct. mega rolls) or
Bounty Paper Towels (6 ct. big rolls)

\$6.99

Angel Soft Bath Tissue
(6 ct. mega or 12 ct. double rolls) or
Sparkle Paper Towels (6 ct. giant or big rolls)

\$5.49

Better Made Chips
Assorted Varieties
9.5 oz.

2/\$4

Our Family Grade 'A' Large Eggs
18 ct.

2/\$3

Doritos
9.25 - 9.75 oz.

2/\$5

Lay's Family Size Chips
9.5-10 oz.

2/\$4

Pepsi Products
(2 liter) or Schweppes Club Soda, Tonic Water or Ginger Ale (1 liter) (plus deposit), or Life Wtr (1 liter)

5/\$5

Faygo Products
Assorted Varieties
12 pk. 12 oz. cans (plus deposit)

4/\$11

Gatorade
32 oz.

10/\$10

Dean's Country Fresh White Milk
Assorted Varieties
1 gallon

\$2.99



SALE DATES: MAY/JUN 2018

TUE 29 WED 30 THU 31 FRI 1 SAT 2 SUN 3 MON 4 TUE 5 WED 6 THU 7 FRI 8 SAT 9 SUN 10 MON 11

Proudly Featuring Our Family Products

EVERYDAY GROCERY

Kingsford Charcoal
15.4 lb.
\$8⁹⁹

Open Pit Barbecue Sauce
18 oz.
10/\$10

Prego Pasta Sauce
(23.25 - 24 oz.)
or Alfredo or Creamy Cheddar
(14.5 oz.)
2/\$4

Aunt Millie's Butter Top Wheat Bread
or Honey Wheat or Honey Butter White (22 oz.)
or Family Style Italian (24 oz.)
Buy One, Get One FREE

Our Family Relish
9 - 10 oz.
10/\$10

Our Family Hamburger or Hot Dog Buns
8 ct.
4/\$5

Progresso Bread Crumbs
15 oz.
\$1³⁹

Wish-Bone Dressing
15 oz.
3/\$5

Our Family Canned Corn or Peas
or Cut or French Style Green Beans
14.5 - 15.25 oz.
5/\$3

Old Orchard 100% Juice
64 oz.
2/\$4

Plochman's Mustard
10.5 oz.
10/\$10

Our Family Applesauce
6 pk.
3/\$5

Kool-Aid Jammers
10 ct.
5/\$10

Our Family Olives
5.75 - 6 oz.
3/\$4

Taco Bell Taco Seasoning Mix
1 oz.
4/\$3

Taco Bell Taco Sauce
(7.5 oz.) or Hard Taco Shells
(12 ct.)
3/\$5

Taco Bell Dinner Kit
(8.85 - 13.86 oz.)
or Mild Con Queso
(15 oz.)
2/\$5

Taco Bell Thick & Chunky Salsa
Mild or Medium
16 oz.
2/\$4

Our Family Refried Beans
15.5 - 16 oz.
10/\$10

Vlasic Pickles
Select Varieties
16 - 24 oz.
\$1⁹⁷

Our Family Canned Vegetables
Potatoes, Carrots, Beets,
Wax Beans, Butter Beans,
Peas & Carrots or Mixed Vegetables
14.5 - 15.5 oz.
4/\$3

Folgers Coffee
(22.6 - 30.5 oz.)
(excludes classic roast
22.6 oz.); or Dunkin' Donuts
Ground Coffee (12 oz.),
K-Cups (10 ct.) or Cold Brew Packs (2 ct.)
\$7⁴⁹

V8 Splash Drinks
64 oz.
\$1⁸⁸

Aunt Millie's Stadium or Honey Hamburger or Hot Dog Buns
8 ct.
\$1⁶⁹

Kellogg's Mini-Wheats Cereal
(15 - 18 oz.) or Honey Smacks (15.3 oz.), Crispix (12 oz.), Corn Flakes (18 oz.), Wild Berry Froot Loops (10 oz.), Froot Loops with Marshmallows (12.6 oz.) or Frosted Flakes with Marshmallows (13.6 oz.)
2/\$5

Our Family Toaster Pastries
8 ct.
2/\$3

Nature Valley Bars
(5 - 6 ct.) or Backpacker Bites (6 ct.), Fiber One Bars (5 - 6 ct.) or Cascadian Farm Organic Chewy Granola Bars (6 - 8 ct.)
\$1⁹⁹

Betty Crocker or Mott's Fruit Snacks
6 - 10 ct. or 18 ct. mini rolls
2/\$4

Our Family Bagged Cereal
28 - 32 oz.
\$2⁹⁹

HOME ESSENTIALS

Our Family Designer Paper Plates, Cups or Bowls
(24 - 54 ct.) or Plastic Cups (40 ct.)
2/\$5

Simply Done Paper Napkins
120 ct.
\$1²⁹

Spartan Foam Plates
30 ct.
10/\$10

Our Family Slider Storage or Freezer Bags
Quart or Gallon,
24 - 42 ct.
2/\$5

Dove Bar Soap
1 ct.
10/\$10

Cottonelle Ultra Bath Tissue
(6 ct. mega or 12 ct. double rolls) or Cleansing Cloths Refill (168 ct.); or Viva Paper Towels (6 ct. big rolls)
\$6⁹⁹

Our Family Tall Kitchen Drawstring Bags
20 ct.
\$3⁴⁹

Spartan Liquid Bleach
64 oz.
\$1⁷⁹

Pedigree Dog Food
15 - 17 lb.
\$13⁹⁹

Dove Body Wash
12 oz.
2/\$6

ORGANIC • NATURAL • SPECIALTY

Germack Coffee
Assorted Varieties
12 oz.
\$9⁹⁹

Bragg Cider Vinegar
32 oz.
\$5⁹⁹

Skinny Pop Popcorn
Assorted Varieties • 4 oz.
\$2⁹⁹

Al Reef Extra Virgin Olive Oil
1 Liter
2/\$6

Now Available at University Foods!

DAIRY & FROZEN

<p>Florida's Natural Orange or Ruby Red Grapefruit Juice Not from Concentrate 59 oz.</p> <p>\$2⁹⁹</p>	<p>Tropicana Lemonade or Strawberry Peach Drink (59 oz.) Farmstand Juice (32 oz.) or Coco Blends (42 oz.); or Lipton Pure Leaf Tea (59 oz.)</p> <p>\$1⁸⁸</p>	<p>Dean's Cottage Cheese or French Onion Dip 24 oz.</p> <p>\$2⁷⁹</p>	<p>Sargento Shredded Cheese 5-8 oz.</p> <p>2/\$5</p>	<p>Sargento Natural Cheese Slices 6.84-8 oz.</p> <p>\$3⁴⁹</p>	
<p>I Can't Believe It's Not Butter! (15-16 oz.) or Spray (8 oz.) or Country Crock Spread with Sunflower Oil (20 oz.)</p> <p>2/\$5</p>	<p>Our Family Cheese Singles 12 oz.</p> <p>2/\$5</p>	<p>Our Family Jumbo Biscuits 8 ct.; 16 oz.</p> <p>3/\$5</p>	<p>Dean's Country Fresh Orchard Pure Orange Juice 1/2 gallon</p> <p>2/\$4</p>	<p>Dannon Yogurt (32 oz.) Light & Fit, Activia or Fruit on the Bottom (4 pk.) or Danimals Smoothie (6 pk.)</p> <p>2/\$5</p>	<p>Our Family Garlic Bread or Breadsticks or Texas Style Toast 10.5-16 oz.</p> <p>\$1⁷⁹</p>
<p>Green Giant Frozen Vegetables Select Varieties 7-10 oz.</p> <p>4/\$5</p>	<p>Totino's Pizza Rolls 15 ct.</p> <p>10/\$10</p>	<p>Cole's Mini Garlic Loaf or Toast 7-8 oz.</p> <p>4/\$5</p>	<p>Kellogg's Eggo Waffles or Pancakes 8-12 ct. or 40 ct. minis</p> <p>2/\$5</p>	<p>Checkers/Rally's or Arby's Fries 22-28 oz.</p> <p>2/\$6</p>	
<p>Hungry-Man Dinners 14-16 oz.</p> <p>2/\$6</p>	<p>Stouffer's Party Size Lasagna or Enchiladas 57-96 oz.</p> <p>\$12⁹⁹</p>	<p>Mr. Dell's Hash Browns 24-32 oz.</p> <p>\$2⁹⁹</p>	<p>Dean's Country Fresh Ice Cream Novelties Sundae Cups, Ice Cream Bars, Sandwiches or Cones 4-12 ct.</p> <p>3/\$10</p>	<p>Dean's Country Fresh Ice Cream or Rainbow Sherbet 4.5 qt. pail</p> <p>\$5⁹⁹</p>	

BEER & WINE

<p>Natural Ice or Natural Light 15 pk., 12 oz. cans (plus tax & dep.)</p> <p>\$6⁹⁹</p>	<p>Smirnoff Ice Assorted Varieties 6 pk., 12 oz. btls. (plus tax & dep.)</p> <p>\$7⁷⁹</p>	<p>Great Lakes Brewing Co. Beers Assorted Varieties 6 pk., 12 oz. btls. (plus tax & dep.)</p> <p>\$8⁹⁹</p>	<p>Budweiser & Bud Light 18 pk., 12 oz. cans (plus tax & dep.)</p> <p>\$13⁹⁹</p>	
<p>Milwaukee's Best Premium or Ice 12 pk., 12 oz. cans (plus tax & dep.)</p> <p>\$6⁹⁹</p>	<p>Daily's Drink Mixes Assorted Varieties 12 oz. pouches (plus tax)</p> <p>5/\$10</p>	<p>Franzia Wines Assorted Varieties 5 Liter (plus tax)</p> <p>\$15⁹⁹</p>	<p>Arbor Mist Fruit Wines Assorted Varieties 1.5 Liter (plus tax)</p> <p>\$5⁹⁹</p>	<p>Livingston Cellars Wines Assorted Varieties 1.5 Liter (plus tax)</p> <p>\$5⁹⁹</p>
<p>Gato Negro Wines Assorted Varieties 750 ml. (plus tax)</p> <p>3/\$12</p>	<p>Korbel Champagne 750 ml. (plus tax)</p> <p>\$10⁹⁹</p>	<p>Cupcake Wines Assorted Varieties 750 ml. (plus tax)</p> <p>\$8⁹⁹</p>	<p>Seagram's Coolers Assorted Varieties 12 oz. btls. (plus tax & dep.)</p> <p>10/\$10</p>	<p>Gallo Wine Singles Assorted Varieties 187 ml. (plus tax)</p> <p>10/\$10</p>

BEVERAGES & SNACKS

<p>Pepsi Products 12 pk., 12 oz. cans (plus deposit)</p> <p>3/\$11</p>	<p>Bubly Sparkling Water 12 pk., 12 oz. cans (plus deposit)</p> <p>2/\$7</p>	<p>Aquafina Water 24 pk., 16.9 oz. btls.</p> <p>\$3⁹⁹</p>		
<p>Coke, Sprite or Fresca 2 liter (plus deposit)</p> <p>3/\$5</p>	<p>7-Up Products 2 liter (plus deposit)</p> <p>5/\$5</p>	<p>7-Up Products 6 pk., 16.9 oz. btls. or 6 pk., 7.5 oz. cans (plus deposit)</p> <p>\$1⁹⁹</p>	<p>Coca-Cola Classic, Diet, Caffeine Free Diet or Zero; or Sprite (plus deposit)</p> <p>4/\$9</p>	<p>Barq's Root Beer, Fanta, Mello Yello or Seagram's Ginger Ale (2 liter) (plus deposit) or Minute Maid or Fuze Iced Tea (2 liter)</p> <p>89¢</p>
<p>Pepsi Products (1.25 liter) (plus deposit) or Life Wtr (1 liter)</p> <p>5/\$5</p>	<p>Lipton Iced Tea (12 pk., 16.9 oz. btls.) or Pure Leaf (6 pk., 18.5 oz. btls.); or Starbucks Frappuccino (4 pk., 9.5 oz. btls.)</p> <p>\$4⁹⁹</p>	<p>Bodyarmor SuperDrink (16 oz.) or Core Perfect pH Water (30.4 oz.)</p> <p>2/\$3</p>	<p>Nabisco Oreo Cookies 6-15.35 oz.</p> <p>\$2⁸⁸</p>	<p>Rold Gold Pretzels (8.75-16 oz.) or Lay's Kettle Chips (7-8 oz.)</p> <p>2/\$5</p>
<p>Keebler Chips Deluxe or Fudge Shoppe Cookies or E.L. Fudge (8.5-14.8 oz.) or Toasted Crackers (8 oz.)</p> <p>2/\$5</p>	<p>Better Made Popcorn or Corn Pops 5-9 oz.</p> <p>2/\$4</p>	<p>Jays Potato Chips (10 oz.) or Snyder's Pretzels (12-14.4 oz.)</p> <p>2/\$5</p>	<p>Orville Redenbacher's Microwave Popcorn 2-3 ct.</p> <p>2/\$4</p>	<p>Entenmann's Cake Chocolate Fudge or Lousiana or Lemon Crunch (18-26 oz.); or Cinnamon Swirl Buns (17 oz.)</p> <p>\$4⁴⁹</p>



USDA Inspected
Fresh Ground Round

\$3.79
lb.



USDA Inspected
Ground Beef Patties
Family Pack

\$3.49
lb.



USDA Inspected
Boneless Beef Ribeye Steak
Family Pack

\$6.99
lb.



USDA Inspected
Boneless Beef Chuck Steak
Family Pack

\$4.69
lb.



USDA Inspected
Boneless Beef Cube Steak
Family Pack

\$4.99
lb.



USDA Inspected
Beef Oxtail

\$5.49
lb.



USDA Inspected
Pork Steak
Family Pack

\$1.79
lb.



USDA Inspected
Country-Style Pork Ribs
Family Pack

\$1.69
lb.



USDA Inspected, Bone-In • **Blade-Cut Pork Chops**
Family Pack

\$1.69
lb.



USDA Inspected
Pork Butt Roast

\$1.69
lb.



USDA Inspected
Meaty Pork Spare Ribs

\$2.29
lb.



USDA Inspected
Whole Boneless Pork Loins

\$1.79
lb.



USDA Inspected
Thin-Sliced Boneless Pork Chops

\$3.49
lb.



USDA Grade 'A' Fresh
Chicken Pinwheel
Family Pack

\$1.29
lb.



Tyson Chicken Tenders

\$2.99
lb.



USDA Grade 'A' Fresh
Split or Cut-Up Chicken

\$1.59
lb.



Bob Evans Roll Sausage
Assorted Varieties
16 oz., or
State Fair Corn Dogs
Assorted Varieties
8-16 oz.

2/\$7



Oscar Mayer Bun Length Wieners
16 oz.

2/\$3



Tyson Boneless Chicken Breast
Tray Pack

\$1.99
lb.

WHILE SUPPLIES LAST!

Tyson Whole Chickens

79¢
lb.



Honeysuckle White Frozen Young Turkey Breast

\$2.39
lb.



Eckrich Smoked Sausage
Assorted Varieties
30-16 oz.

\$5.99



Smithfield Bacon
Assorted Varieties
16 oz.

\$4.99



Lake Lanier Fully-Cooked Breaded Chicken
3 lb. bag

\$5.99



Hillshire Farm Sliced Lunch Meat
Assorted Varieties
7-9 oz.

2/\$7

Cumberland Gap Premium Ham
Assorted Varieties • 8 oz.

2/\$5



Depoe Bay Whiting Fillets
2 lb. bag

\$5.99



Pacific Dynasty Cooked Shrimp
2 lb. bag • 31-40 ct.

\$14.99



SeaBest Snow Crab Clusters
2 lb. box

\$21.99



Happy Seas Catfish Fillets
5 lb. bag

\$24.99

Frozen Sockeye Salmon Fillets

\$2.49
lb.



Lofthouse Cookies
Assorted Varieties
13.5 oz.

2/\$5



Jimmy's Gourmet Cookies
Assorted Varieties
10.5 oz.

2/\$7



Sliced Loaf Cakes
Assorted Varieties
16 oz.

2/\$6



Sabra Hummus
Assorted Varieties
8 oz.

2/\$7

Garden Fresh Salsa or Tortilla Chips
Assorted Varieties
16 oz.

2/\$6

FRESH PRODUCE



Fresh Express Old Fashioned Cole Slaw
(14 oz.), Iceberg Garden Salad (12 oz.) or Shredded Iceberg Lettuce (8 oz.)

10/\$10



Idaho Russet Potatoes
(3 lb. bag) or Vidalia Sweet Onions (2 lb. bag)

10/\$10



Jumbo Sweet Cantaloupe or Honeydew Melon
each

2/\$6



California Peaches or Nectarines

\$1.69
lb.



Green Cabbage

49¢
lb.



Dole Cauliflower
(each) or Romaine Hearts (3 ct. pkg.)

2/\$5



Favorite Garden Vegetables!
Green Beans, Yellow Summer or Zucchini Squash or Eggplant

\$1.49
lb.



Tomatoes On-the-Vine

\$1.49
lb.

open acres

Source of Riboflavin Snow White Mushrooms

2/\$4